

Purpose of Coatings

Protection from:
Abrasion
Erosion
Impact wear

Dimensional repair
Induction coatings

Application

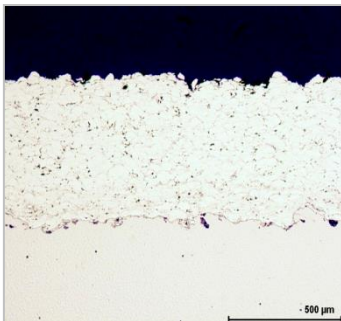
Bearing seats
Sealings
Bushings

Piston rods
Guides
Induction heater

Features

Coating thickness: $D = 0.1... > 3 \text{ mm}$
Porosity: $\Phi < 1...6 \%$
Roughness as sprayed: $R_z = 40...100 \mu\text{m}$

- Good machinability of chrome steel by turning and grinding
- Low shrinking of carbon steel



Chemical Specification

FeCrNiMoMn
FeCrMnNi
FeCr
FeC

Physical Specification

Hardness: up to 550 HV_{0.3}
Density (theor.): ~ 7.9 g/cm³
Adhesive Tensile Strength
(EN ISO 14916): > 45 N/mm²
Operat. temperature: < 500 °C

Spray Technologies

ARC: Wire arc spraying
FS: Flame spraying
CGS: Cold gas spraying
HVOF: High Velocity Oxy
Fuel Spraying