



_THERMAL SPRAY

e-MET EMC Protection Coatings

Purpose of Coatings

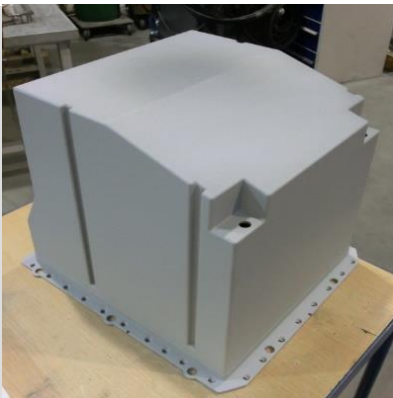
Shielding of high-frequency electromagnetic fields

Applications

- Component parts made of plastics and fibre-reinforced plastics, lightweight construction materials in vehicle and aircraft construction
- Battery housings, cable tunnels, connectors, enclosures for electronics, power electronics, high frequency technology

Features

- Technologies: Arc spraying, Wire flame spraying
- Coating materials: Sn, Zn, Al, Cu
- Base body materials: Thermoplastics with or without reinforcement, sheet moulding components, fibre-reinforced plastic material, concrete, stone, timber
- Coating thickness: 0.05...0.4 mm
- Screening attenuation [ASTM D-4935-89]
Frequency range 10 MHz...4 GHz: 80...103 dB

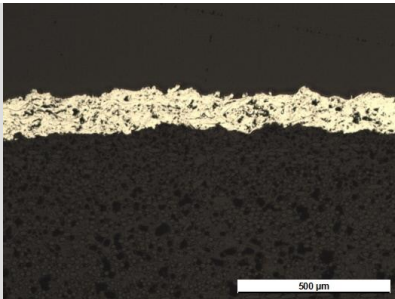


AMG TITANIUM ALLOYS & COATINGS

GfE Fremat GmbH
Gewerbegebiet Süd 20,
09618 Brand-Erbisdorf, Germany

GfE Metalle und Materialien GmbH
Höfener Str. 45, 90431 Nürnberg, Germany

www.gfe.com



Benefits

- Numerous lightweight construction materials coatable
- Thermally sprayed metal coatings have significant advantages over other EMV shieldings as sheet metal designs or usage of metal foil inlays:
 - Small coating thickness – small constructed space, low weight
 - Good adhesion on plastics – also for large surface areas
 - No adhesive or solvent necessary – no drying time
 - Rugged and solderable surface
 - Domed and shaped parts coatable

Our Service Offering

- Coating of sample and prototype parts, including fixture construction
- Advisory service, design optimisation, selection of coating material, development of specifications for serial technologies
- After thermal spraying process: sealing of residual porosity
- Mechanical post processing
- Measuring, testing, outgoing inspection, packaging according specifications



Who we are

With more than 100 years of experience, GfE is one of the world's leading manufacturers and suppliers of high-performance metals and materials. Based on our comprehensive materials science know-how, we develop high-quality tailor-made solutions for a wide range of industrial applications. We offer our customers fast service and qualified technical advice.



Certification in accordance with DIN EN ISO 9001, DIN EN ISO 14001, DIN EN ISO 50001, DIN ISO 45001 and DIN EN ISO/IEC 17025 support our claim to the highest quality and safety. We can thus guarantee products that meet the specific requirements of our customers. Your trust and satisfaction are the cornerstone of our business.

GfE is a subsidiary of AMG Advanced Metallurgical Group N.V., Netherlands, a global leader in the production of specialty metals and metallurgical vacuum furnace systems.

Technical Contact: Dr. Marcel Roth

Phone: +49 (0)37322 472-536

E-mail: marcel.roth@gfe.com

Commercial Contact: Steffen Schmidt

Phone: +49 (0)37322 472-505

E-mail: steffen.schmidt@gfe.com