

_THERMAL SPRAY

p-MET / p-CER Porous Gas Flow Adjusting Coatings

Purpose of Coatings

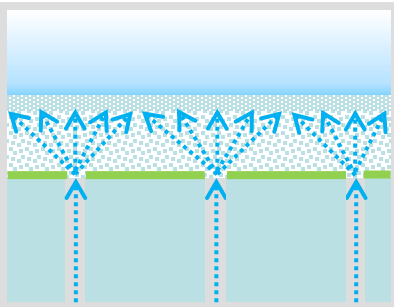
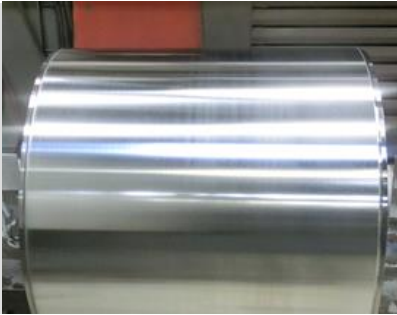
Microporous coatings for guide, deflection, fixing of flexible material and parts

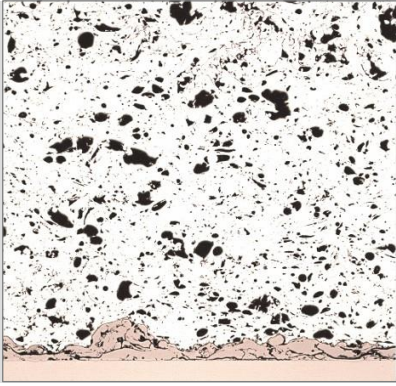
Applications

- Cylinders and pulleys for production and coating of paper web, film web or other sensitive materials and parts
- Contact-free deflection at a uniformly distributed air or gas cushion
- For fixing of paper web, film web or other materials and parts with low pressure during processing (printing, coating, cutting, thermoforming)

Features

- Technologies: Plasma spraying Arc spraying, wire flame spraying, HVOF
- Coating materials: Ceramic (several oxides) Steel, Al, Cu, further metals and alloys
- Base body materials: Aluminium alloys, steel, further metals and alloys
- Porosity, permeable to gas: up to approx. 10 %





Benefits

- Combination of different materials, technologies and designs to multilayers – this offers high variances to adapt the properties of the microporous coating system to the requirements of the application
- Coatings can be applied at parts with cylindrical or plane shape – even three-dimensional shaped surfaces can be coated
- Mechanical post-treatment to adjust dimensional and shape tolerances – adjusted tools and parameters to avoid material break loose or close the pores
- At the whole surface: evenly distributed over or low pressure due to plurality of micropores
- High mechanical stability of the coating
- Cost-efficient production of large areas coating

Our Service Offering

- Coating of sample and prototype parts, including fixture construction
- Advisory service, design optimisation, selection of coating material
- Development of specifications for serial technologies
- Serial production
- Pre-treatment, coating and post-treatment of parts (finish-machining)
- Cleaning, testing, quality control, packaging according specifications



Who we are

With more than 100 years of experience, GfE is one of the world's leading manufacturers and suppliers of high-performance metals and materials. Based on our comprehensive materials science know-how, we develop high-quality tailor-made solutions for a wide range of industrial applications. We offer our customers fast service and qualified technical advice.



Certification in accordance with DIN EN ISO 9001, DIN EN ISO 14001, DIN EN ISO 50001, DIN ISO 45001 and DIN EN ISO/IEC 17025 support our claim to the highest quality and safety. We can thus guarantee products that meet the specific requirements of our customers. Your trust and satisfaction are the cornerstone of our business.

GfE is a subsidiary of AMG Advanced Metallurgical Group N.V., Netherlands, a global leader in the production of specialty metals and metallurgical vacuum furnace systems.

Technical Contact: Dr. Marcel Roth
 Phone: +49 (0)37322 472-536
 E-mail: marcel.roth@gfe.com

Commercial Contact: Steffen Schmidt
 Phone: +49 (0)37322 472-505
 E-mail: steffen.schmidt@gfe.com